

Strongroom Studios

120-124 Curtain Road
Shoreditch
London EC2a 3SQ

Strongroom Two

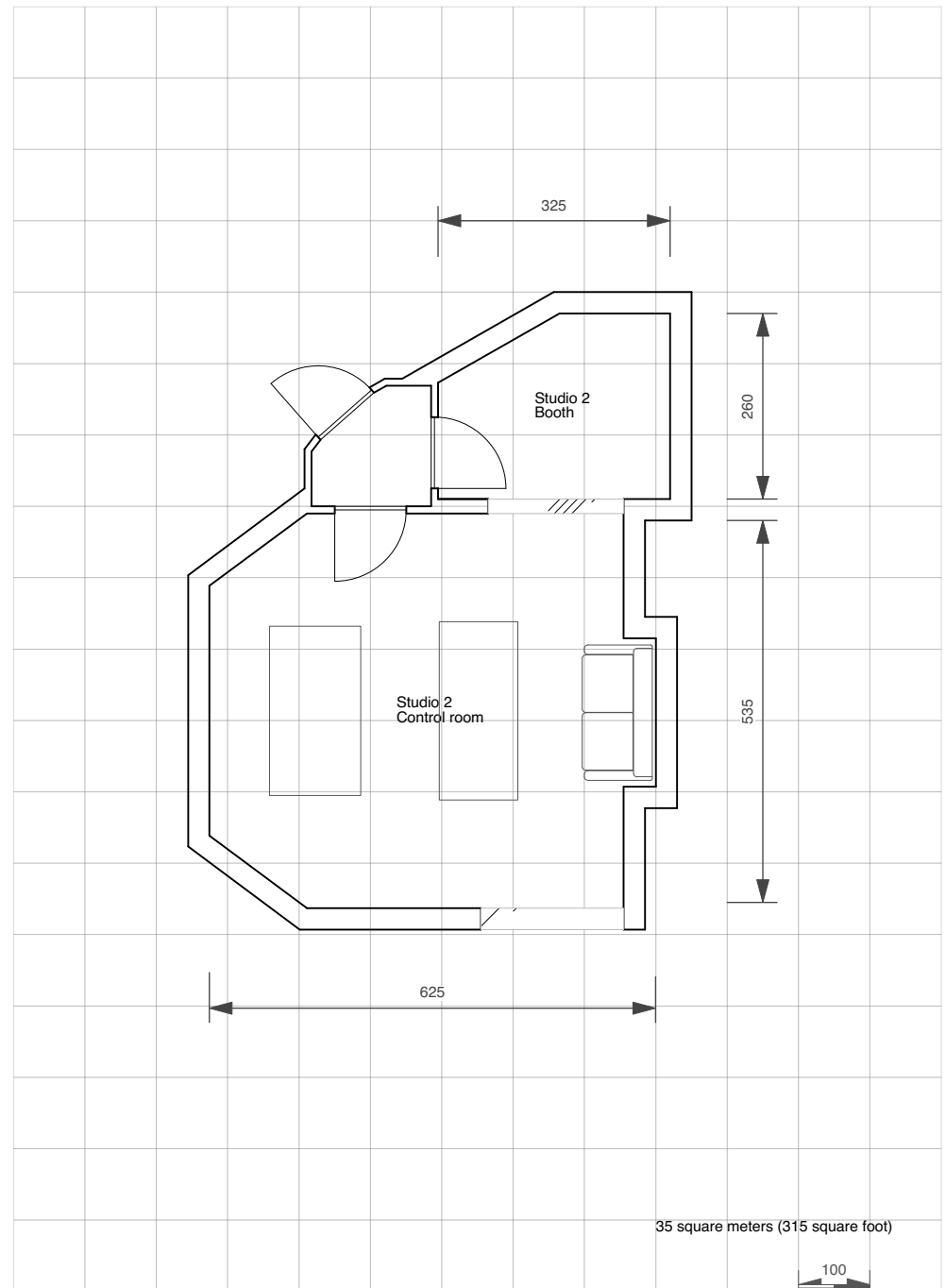
Nestled away discretely via the main Reception, Studio 2 is Strongroom's best kept secret. Featuring a spacious, leisurely control room, a sizeable booth and a unique street-side view, this is Strongroom with a difference. Once the go-to studio for hit remix production and surround mixing, Studio 2 was then closed to the public for years as Nigel Godrich's private facility, until 2018 when the doors opened once more as a joint venture.

Refurbished to feature a minimalist, collaborative approach marrying a selection of artwork from Nigel's personal collection and original Jamie Reid panelling, Studio 2 brings a new aesthetic to Strongroom for those in search of a contemporary feel with greater environmental control. A large HD projector shines onto a screen behind the mix position and optional coloured lighting with low-noise dimmers allow for full lighting customisation.

Centered around a one-of-a-kind Dalcon console, and with the Strongroom-staple Boxer main monitors, the studio also offers Kii Audio, NS10 and Auratone nearfields along with a selection of classic vintage synthesizers (Moog, Juno, Transcendent 2000 etc). The booth houses a Wendel & Lung upright piano with a clear line of sight to the mix position and exterior windows.

Equipment list

Console Dalcon (32 Channels) with GML fader automation	Reverbs & Effects AMS dmx 15-80 DeltaLab Effectron II Eventide H9000 EMT 140 Plate Reverb Roland DC-30 Roland SPH-323
Monitoring Coastal Acoustics Boxer T5 Kii THREE Yamaha NS10 (with BK XXLS400 sub) Auratone C5	Backline Moog Minimoog Model D Moog Subsequent 37 Powertran Transcendent 2000 Roland Juno 60
Pro Tools & Converters Pro Tools HDX2 (32 in / 32 out) Apogee Rosetta 200	Wendel & Lung 122 upright piano
Computer Specs Mac Pro 6,1 3.5 GHz 6-Core Intel Xeon 64 GB RAM AMD FirePro D500 OS X 10.13.2	Software & Plug-ins Antares Auto Tune Pro Apple Logic X Audio Ease Altiverb 7 XL BombFactory all bundles Digidesign Re-Vibe Eventide Anthology II Fabfilter Total FXpansion BFD 2 iZotope RX6 McDSP Filterbank Melodyne Editor 4 ProTools HD 10/11/12 Slate Digital Virtual Buss Compressors – Virtual Mix Rack – Trigger Softube Studio Collection Serato Pitch n Time Pro Sonnox EQ w/GML option SoundToys 5 TC Master X3 UAD Octo card with pretty much everything Valhalla DSP Room – VintageVerb – Shimmer – Ubermod – Freq Echo – Plate Waves Abbey Road Collection – Center – CLA Classic Compressors & Signature Series – Diamond – In-Phase – Tape, Tubes & Transistors – Vocal Rider
Tape Machine 3M M79 24 track 2" Studer A800 MkIII 16 and 24 track 2" Ampex ATR 102 two track 1/2"	
Synchroniser Avid Sync HD	
Mic Pre-amps & EQs 1x API 512b 1x API 512c 12 x API 550A API 560b	
Dynamics EAR 660 Smart Research C2 Universal Audio 175 4x Urei 1176LN	



Equipment is subject to change. All sizes are approximate with maximum dimensions given. Units in centimeters.