

Strongroom Studios

120-124 Curtain Road
Shoreditch
London EC2a 3SQ

Strongroom Three

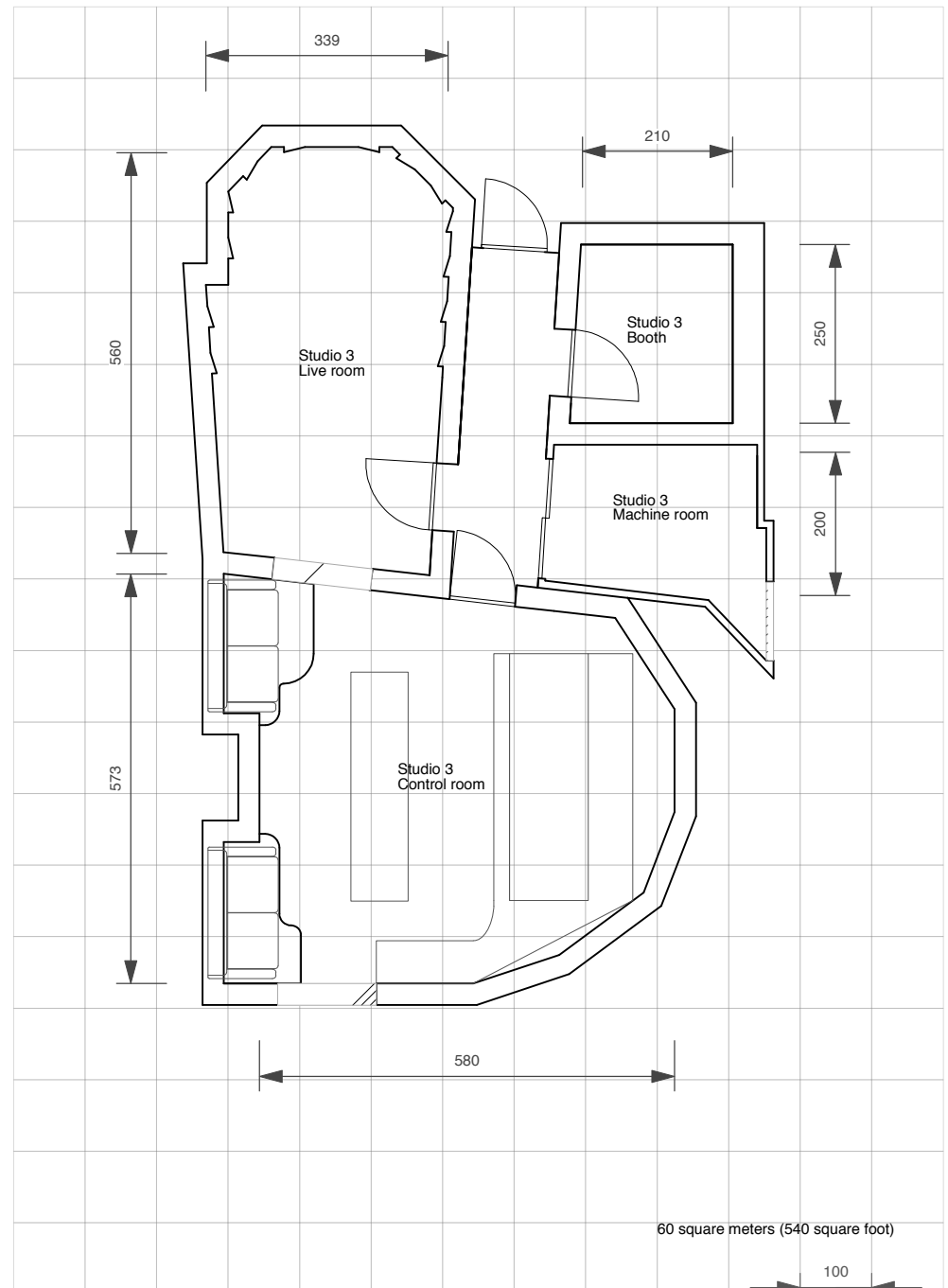
Spacious, comfortable, and with a reputation as one of the most accurate sounding mix rooms in Europe, Studio 3 regularly attracts clients from around the world and from all musical genres. It receives frequent praise from artists, producers and engineers who enjoy the mix of great acoustics, excellent equipment and a relaxed, comfortable environment.

Designed by White Mark and built around the classic SSL 4056 G+ console with Boxer monitoring, Studio 3 has a long list of mix credits and is increasingly in demand for vocal, writing and full band tracking sessions, thanks to the adjoining slate/wood live room and separate isolation booth.

A 48 I/O Pro Tools HDX2 system with long list of plug ins keeps sessions running efficiently; for analogue fans there's an Otari MTR90 24 track tape machine and choice of Ampex or Otari 2 track. A comprehensive selection of outboard processors is available in the racks and an EMT plate reverb is permanently installed, with a range of effects, toys and instruments available on request, including a selection of classic analogue synths (Juno, Jupiter, Moog, OSCar etc).

Equipment list

Console	EMT 140 Stereo Tube Plate
SSL 4056 G+ with Ultimatum & Total Recall	Lexicon 224XL
Monitors	TC Electronic M5000
Coastal Acoustics Boxer 5 series	Yamaha PRO R3 Digital Delays
Yamaha NS10	AMS 1580S
ATC SCM25A	Roland SDE3000
Genelec 1031A (on request)	Roland SDE3000A
Dynaudio BM15 (on request)	Roland SDE330Effects Processors
Pro Tools	Audio & Design Panscan
Pro Tools HDX2 (48 in / 48 out)Tape Machines	Eventide H3000 SE (DSE/DSX software)
Otari MTR 90 MK 2, 24 Track 2"	MXR Flanger/Doubler
Otari MTR 12	Roland Dimension D
Ampex ATR102 2 Track 1/2"	TC M2000 Wizard
Studer A80 (on request)	Thermionic Culture Culture Culture
Sony PCM R700 DAT	Yamaha SPX 990
HHB CDR-850 CD RecorderDigital Converters	Yamaha SPX 90Plug-ins:
Prism Dream AD-124	
Prism Dream DA-1	ProTools HD 10/11/12
	Waves Platinum
Synchroniser	SoundToys Native FX
Pro Tools Sync HD	Sonnox EQ w/GML option
Konnektor SSL to DAW Interface	Audio Ease Altiverb 7 XL
Timeline Lynx with Motionworker	McDSP Filterbank
Mic Preamps & EQs:	iZotope RX2
API 512c x 2	Antares Auto Tune Evo
API 550b x 2	Melodyne Editor 4
Focusrite 315	Serato Pitch n Time Pro
Focusrite 215	Eventide Anthology II
GML 8200 EQ	Digidesign Re-Vibe
Thermionic Culture EarlyBirdDynamics	TC Master X3
2 x dbx 160A	All BombFactory bundles
dbx 900 rack	UAD - Octo card with everything
3 x dbx 902 De-essers	
3 x dbx 903 compressors	
dbx 929 Noise Reduction	
2 x Drawmer 201 Gates	
Prism Maselec Series MLA-2	
Neve 33609/C	
2 x Urei 1176LN (blackface)	
Thermionic Culture PhoenixReverbs	
AMS RMX16	
EMT 140 Stereo Tube Plate	



Equipment is subject to change. All sizes are approximate with maximum dimensions given. Units in centimeters.