

# Strongroom Studios

120-124 Curtain Road  
Shoreditch  
London EC2a 3SQ

## Strongroom One

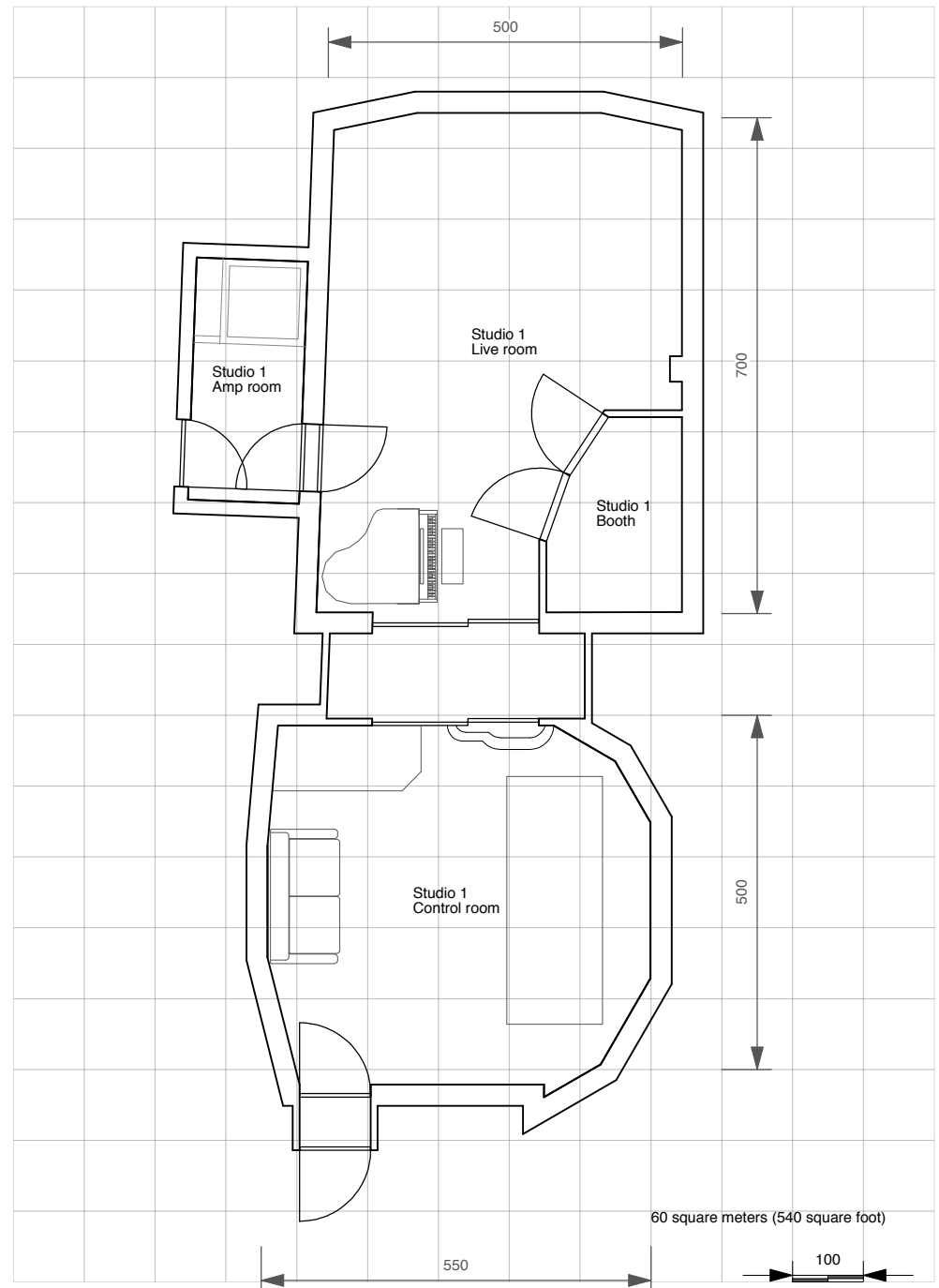
The original Strongroom – it all began here and countless hit records have been produced in this studio. The double-height live room has a fantastic sound, particularly for drums but also very impressive for full band, orchestral, piano and vocal sessions. Separate booth and isolation areas make this room a great choice for a wide range of projects.

Jamie Reid visuals and plenty of natural daylight contribute to the comfortable, creative environment, with a spacious leisure room available for clients to relax between takes.

In the adjacent control room, acoustics by Harris Grant and Boxer/Chevin monitoring combine to create an exceptional listening space, with a choice of near field monitors including Genelec, Dynaudio and NS10s. The Neve VR60 Legend, with Encore automation and Total Recall, offers legendary sonic quality, with improved mic and mix amps compared to the standard VR series. 48 I/O Pro Tools HDX2 with a comprehensive list of plug ins runs on a fast, reliable Apple computer. Analogue recording is handled by two 24-track Studer A800s and a choice of Ampex ATR102 or Otari MTR12 ½". Two EMT plate reverbs and an array of outboard processors are permanently installed with a further selection of spring reverbs, tape delays and other toys available on request.

## Equipment list

Console: Neve VR60 Legend with Encore+ Automation, Total Recall, Events & Dynamic Metering/Monitoring: Coastal Acoustics Boxer 5 Series Yamaha NS 10 Genelec 1031 Dynaudio BM15 (on request) Hearback Personal Monitor System	2 x dbx 160 XT 2 x Empirical Labs Distressor with British Mod Neve 33609 Tube Tech CL1A Smart Research C1 Thermionic Culture Phoenix 11th anniversary 2 x Urei 1176 LN (blackface)
Pro Tools: Pro Tools HDX2 48 in / 48 out	Outboard effects: Thermionic Culture Culture Vulture Eventide H3000 SE (DSE/DSX software) Reverbs: Lexicon 480L AMS RMX 16 EMT 240 Stereo Plate EMT 140 Mono Valve Plate Digital Delays: AMS S-DMX
Tape Machines: Studer A800 MkIII 16 and 24 track 2" Ampex ATR 102 two track 1/2" Sony PCM R700 DAT HHB CD Recorder	Software & Plug-ins: ProTools HD 10/11/12 Waves Platinum Sonnox EQ w/GML option Audio Ease Altiverb 7 XL McDSP Filterbank iZotope RX2 Antares Auto Tune Evo + 7 Melodyne Editor 4 Serato Pitch n Time Pro Digidesign Re-Vibe All BombFactory bundles UAD – Octo card with everything
Digital Converters: Prism Dream AD-124 Prism Dream DA-1	
Synchroniser: Pro Tools Sync HD Timeline Lynx with Motionworker	
Miscellaneous: Kawai Grand Piano Fender Rhodes 73 Mark 1 Mic Preamps & EQs: 4 x API 512c 2 x API 550b 2 x Cartec Pre-Q5 2 x Neve 1073LB Hairball Audio Lola GML 8200 Thermionic Culture Earlybird Thermionic Culture Pullet Tube Tech PE1BDynamics: 2 x API 525 2 x dbx 160 VU	



Equipment is subject to change. All sizes are approximate with maximum dimensions given. Units in centimeters.